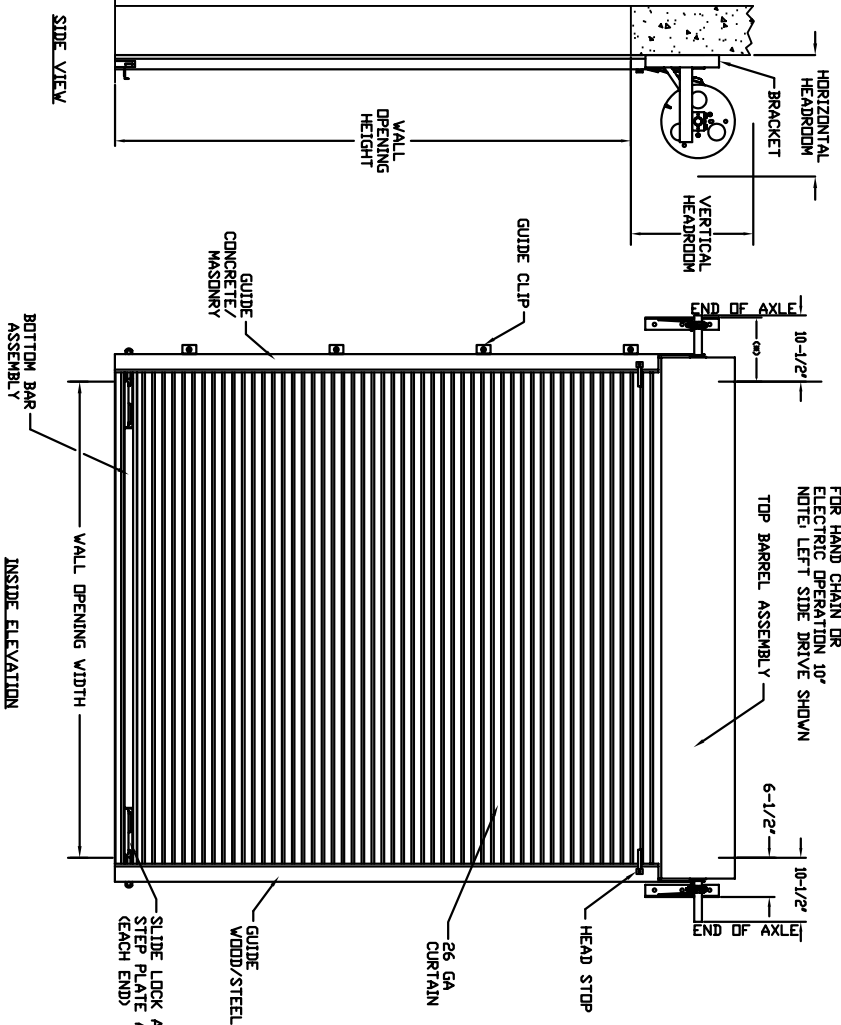
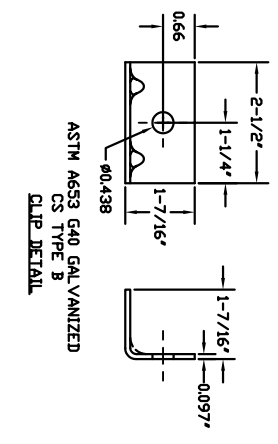
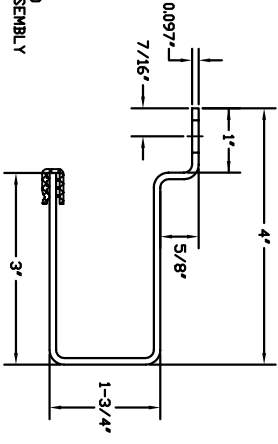
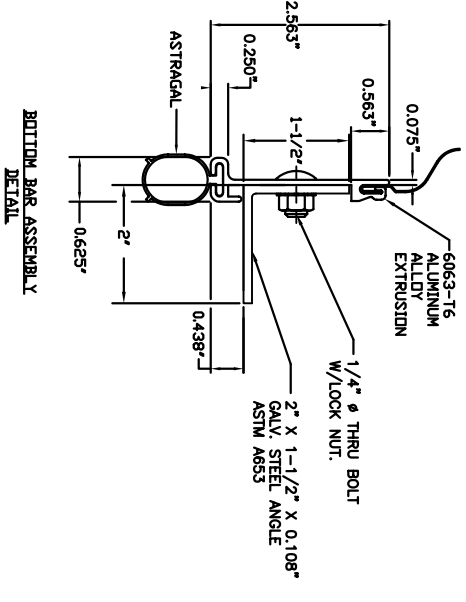
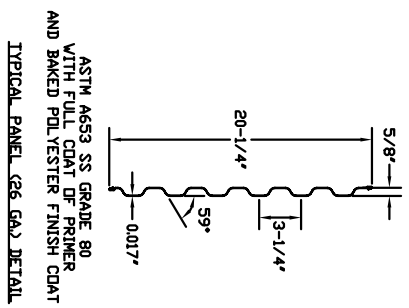


OPENING HEIGHT	THRU 8'-0"	OVER 8'-0"	OVER 10'-0"	OVER 14'-0"	OVER 16'-0"	OVER 18'-0"
VERTICAL HEADROOM	18'	20'	21'	22'	23'	24'
HORIZONTAL HEADROOM	19'	21'	22'	23'	24'	25'



(*) FOR PUSH-UP OPERATION 6-1/2" FOR HAND CHAIN OR ELECTRIC OPERATION 10" NOTE: LEFT SIDE DRIVE SHOWN



- GENERAL NOTES:**
1. OPERATION TYPE MAY BE PUSH-UP, HAND CHAIN OR ELECTRIC.
 2. DOORS SHALL BE PROVIDED WITH SLIDE LOCKS AT EACH END OF BOTTOM BAR, ENGAGING GUIDES IN THE LOCKED POSITION.
 3. SERIES 2750 IS THE INSULATED VERSION OF SERIES 2500.
 4. VISION PANELS ARE AVAILABLE.

THESE COMPENSATED DOCUMENTS SUBMITTED BY DBCI CONTAIN INCORPORATION OF A PROPRIETARY NATURE AND MAY NOT BE REPRODUCED OR USED TO MANUFACTURE ANYTHING IN PART OR IN WHOLE FOR ANY PURPOSE WITHOUT THE EXPRESS PERMISSION OF DBCI. PERMISSION IS NOT GRANTED FOR ANY TYPE OF REPRODUCTION WITHOUT THE EXPRESS PERMISSION OF DBCI. DIMENSIONS IN ALL UNITS.

UNLESS OTHERWISE SPECIFIED DIMENSIONS ARE IN INCHES

TOLERANCES ARE:	FRACTIONS	ANGLES	HOLE DIAMETERS
DECIMAL	± 1/16	± 0°30'	UNDER .251 +.004
XXX ±.005			.251 to .500 +.003
			OVER .500 +.008

DATE	REV	DESCRIPTION	DATE	APPROVAL

DATE	REV	DESCRIPTION
8/21/06	D	ISSUE FOR MANUFACTURE
8/21/06	B	REVISED

DATE	REV	DESCRIPTION
8/21/06	D	ISSUE FOR MANUFACTURE
8/21/06	B	REVISED

DOORS & BUILDING COMPONENTS
 26 GA, COMMERCIAL DOOR
 DOWNSIDE ON CHAINERS, AZ, HOUSTON, TX
 ©2000 DBCI ALL RIGHTS RESERVED

26 GA, COMMERCIAL DOOR
 SERIES 2500/2750 DOOR ASSEMBLY
 -400-005-0014.03

